

Dashboard - COVID-19 Thailand

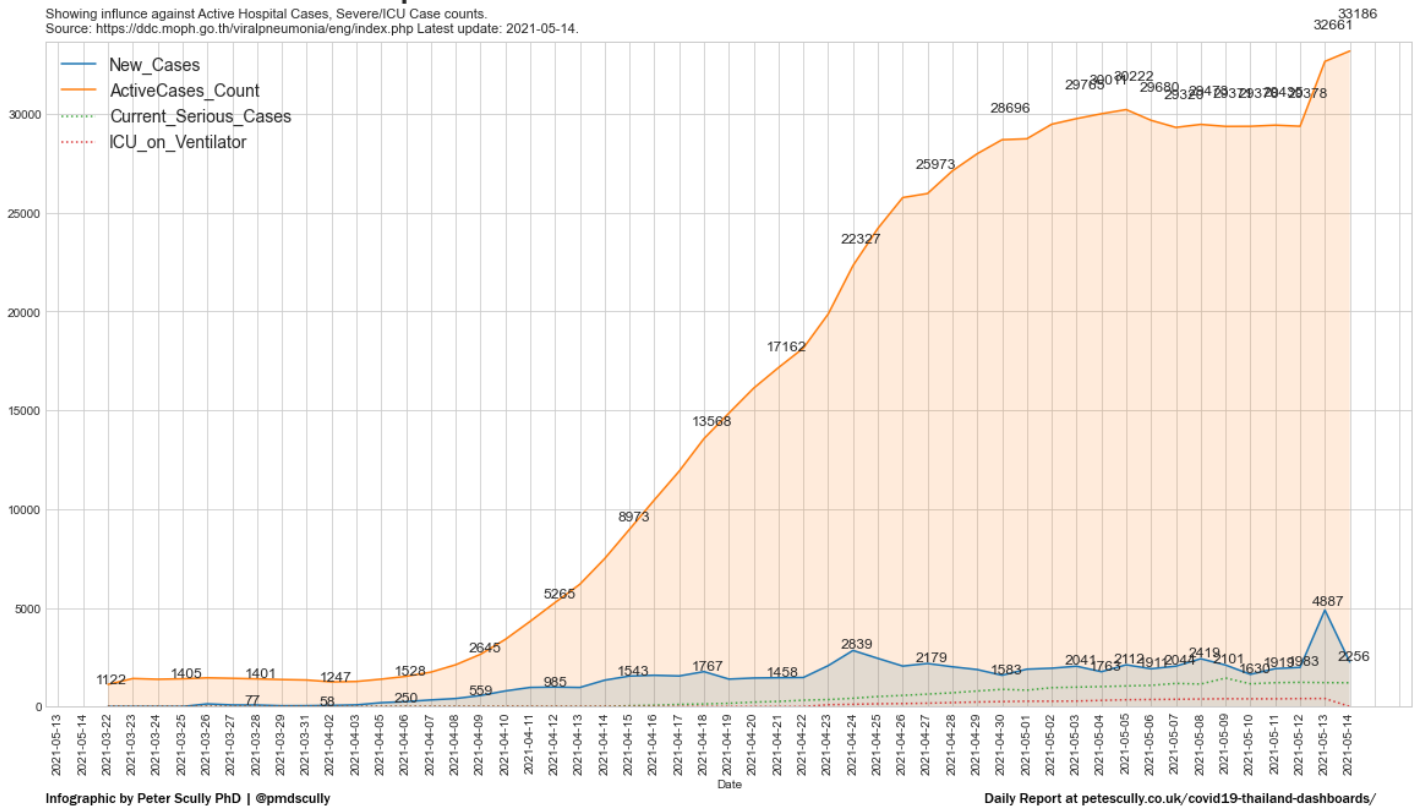
Date: Fri May 14 2021 19:30:21 GMT+0700 (Indochina Time)

New Cases Announced with Active Cases "Patients in Hospitals": Via Thai Ministry of Public Health (MOPH)

- Note: Collection of Serious Cases started on 15/04, therefore no information is shown before that date.
- Note: 'ICU_on_Ventilator' frequent source is: <https://facebook.com/informationcovid19> - COVID-19 Situation Admin. (CCSA) morning briefing, 11:30. Also sporadically within MOPH clippings.
- Source: <https://covid19.th-stat.com/> (ActiveCases_Count)
- Source: <https://ddc.moph.go.th/viralpneumonia/eng/index.php> (Note: Duplicate or 0 Values, if available, are corrected by end of day.)

New Cases vs Active Hospitalised Cases

Showing influence against Active Hospital Cases, Severe/ICU Case counts.
Source: <https://ddc.moph.go.th/viralpneumonia/eng/index.php> Latest update: 2021-05-14.

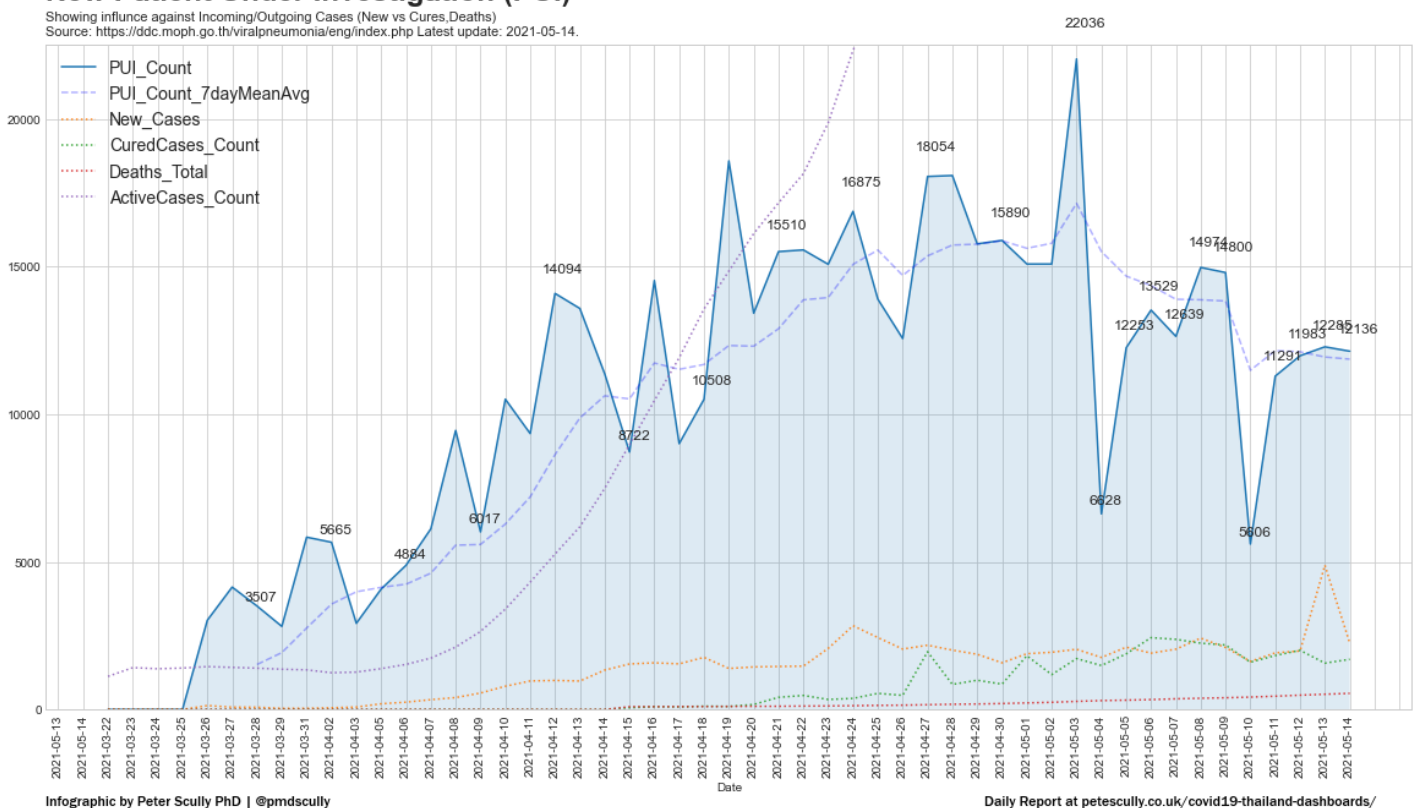


Newly Added "At Risk" Patients Under Investigation (PUI): Via Thai MOPH

- Definition of Patients Under Investigation (PUI): https://ddc.moph.go.th/viralpneumonia/eng/file/guidelines/g_surveillance_290121.pdf
- The PUI Count is typically released in PM/Eve (Duplicates are typically corrected by end of day.).
- Source: <https://covid19.th-stat.com/> (ActiveCases_Count, CuredCases_Count)
- Source: <https://ddc.moph.go.th/viralpneumonia/eng/index.php>

New Patient Under Investigation (PUI)

Showing influence against Incoming/Outgoing Cases (New vs Cures,Deaths)
Source: <https://ddc.moph.go.th/viralpneumonia/eng/index.php> Latest update: 2021-05-14.

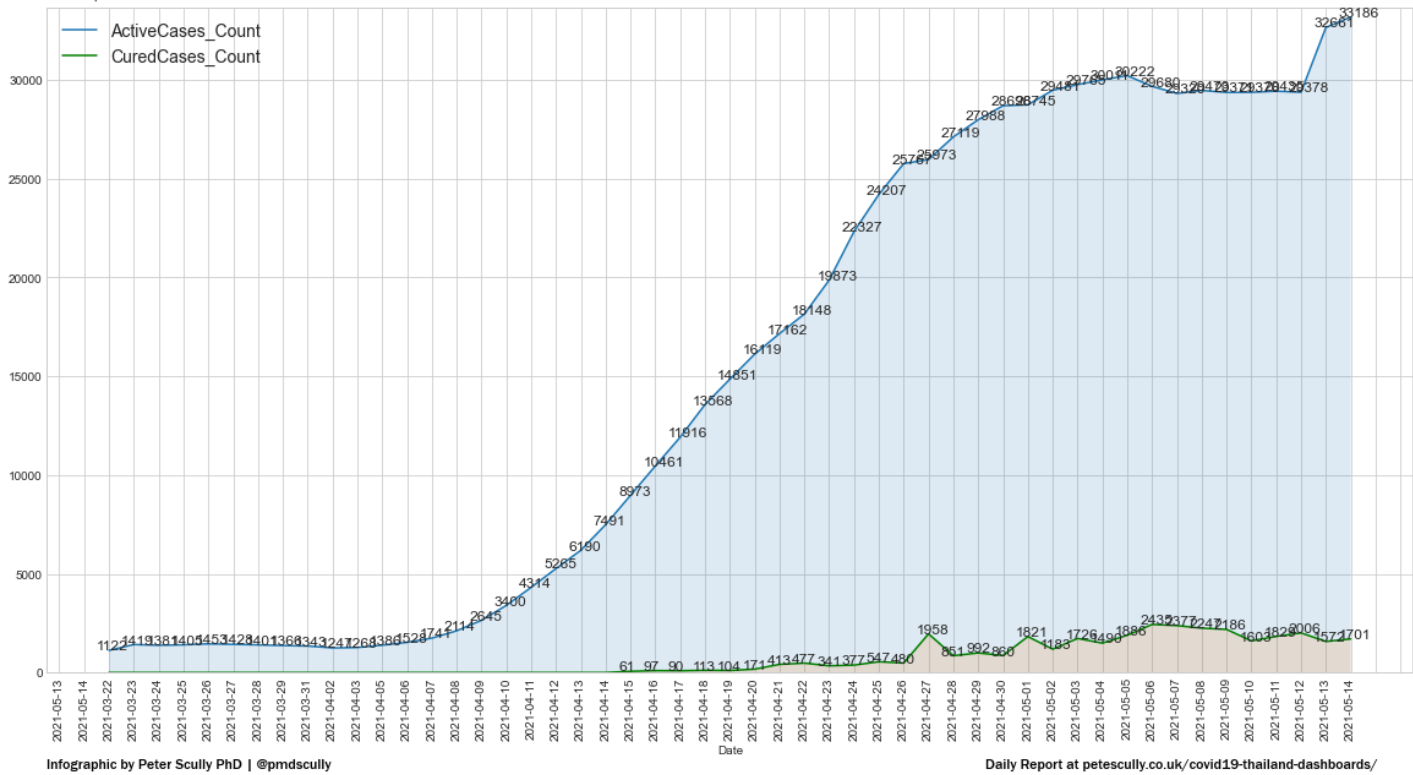


Active Cases: Patients in Hospital: Via Thai Ministry of Public Health (MOPH)

Source: <https://covid19.th-stat.com/>

Patients in Hospital and Newly Recovered

Source: <https://covid19.th-stat.com/>
Latest update: 2021-05-14.

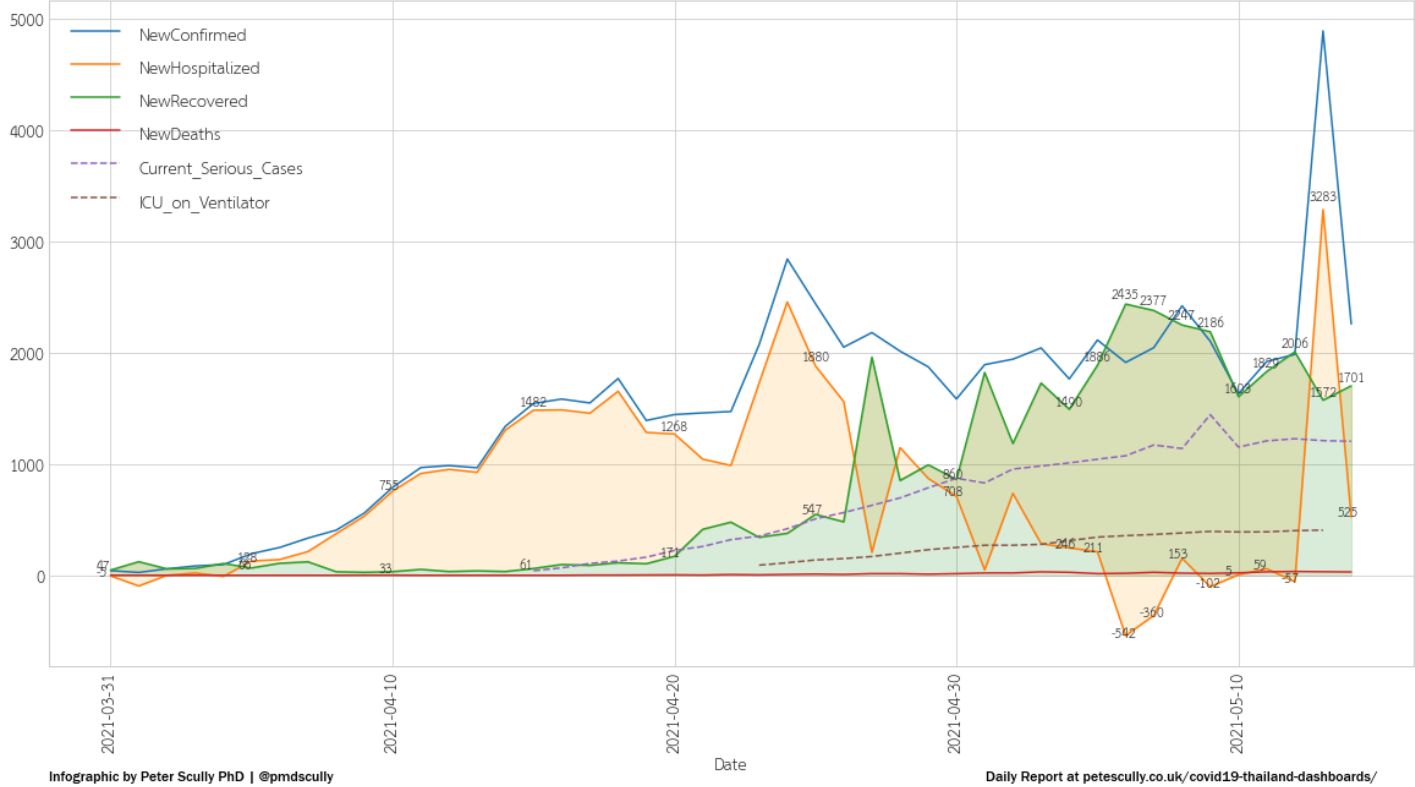


Microscopic View of Case Time-to-Recovery in Thailand over 120-Days: Via COVID19.TH-STAT - 12pm each day

- Showing the avg time-to-recovery of "Patients in Hospitals" and can be an indicator to estimate avg case treatment success, avg case severity, avg hospital-load or patient conditions, etc.
- For non-recovered cases after 14-days, we may interpret these as more serious. These data trends can help give answers, i.e. how quickly do patients typically recover under the current conditions, etc.
- Source: <https://covid19.th-stat.com/> [<https://ddc.moph.go.th/viralpneumonia/eng/index.php> (for Serious/ICU)]

Microscopic View of Case Recovery Lag-Time in Thailand over 45-Days

Source: <https://covid19.th-stat.com/>
Dates: 2021-03-31 - 2021-05-14 (left-right). Latest Known Record on 2021-05-14. Latest Data Collection on 2021-05-13.



Where are Today's New Cases and New Deaths by Province?: Via Daily CCSA Briefings at 12:30pm

- Showing Cases and Deaths announced in each province Today. Scale is linear (left to right). Reported deaths are more easily seen in the reported numbers on each bar.
- Showing X/Y of Today's Reported Cases: X are from the Briefing report's Province Cases Table. Y is from the Announced Total (i.e. infographics). Numbers can differ due to their release times.
- Data Made Available via: <https://github.com/djay/covidthailand>
- Source: <https://facebook.com/informationcovid19> - COVID-19 Situation Administration (CCSA) morning briefing, data typically arriving 13:30

New Cases & New Deaths by Province Today



New Cases by Province (Where infection was contracted): Via Daily CCSA Briefings at 12:30pm

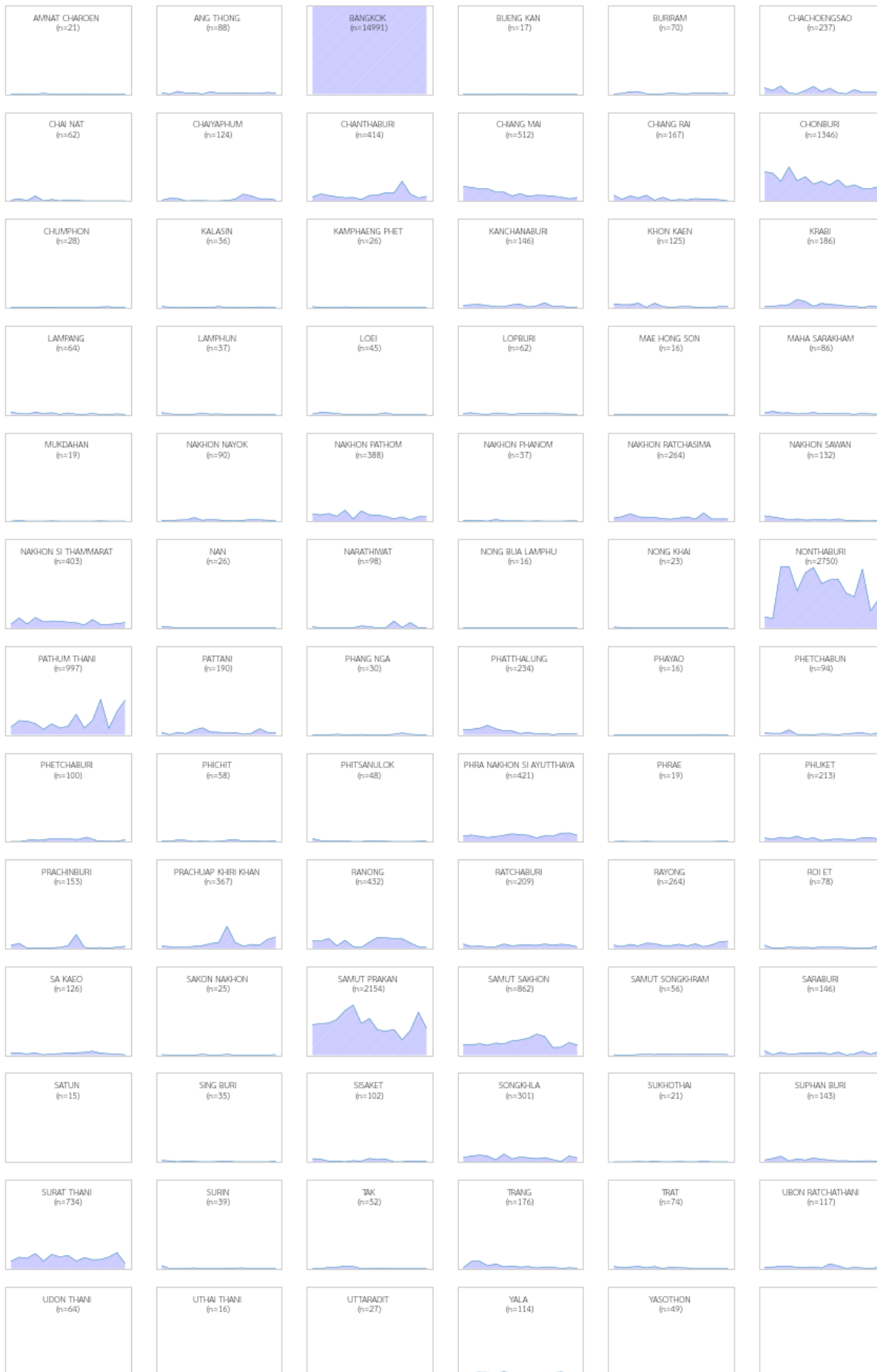
- Showing Cases announced in each province over 14-days (left to right, oldest to most recent). Daily cases between 0-400 (bottom to top).
- Showing X/Y of Today's Reported Cases: X are from the Briefing report's Province Cases Table. Y is from the Announced Total (i.e. infographics). Numbers can differ due to their release times.
- Data Made Available via: <https://github.com/djay/covidthailand/>
- Source: <https://facebook.com/informationcovid19> - COVID-19 Situation Administration (CCSA) morning briefing, data typically arriving 13:30

New Cases by Province over 14 Days

Dates 2021-04-30 - 2021-05-14 (Left-Right). Y-Scale: 0-400.

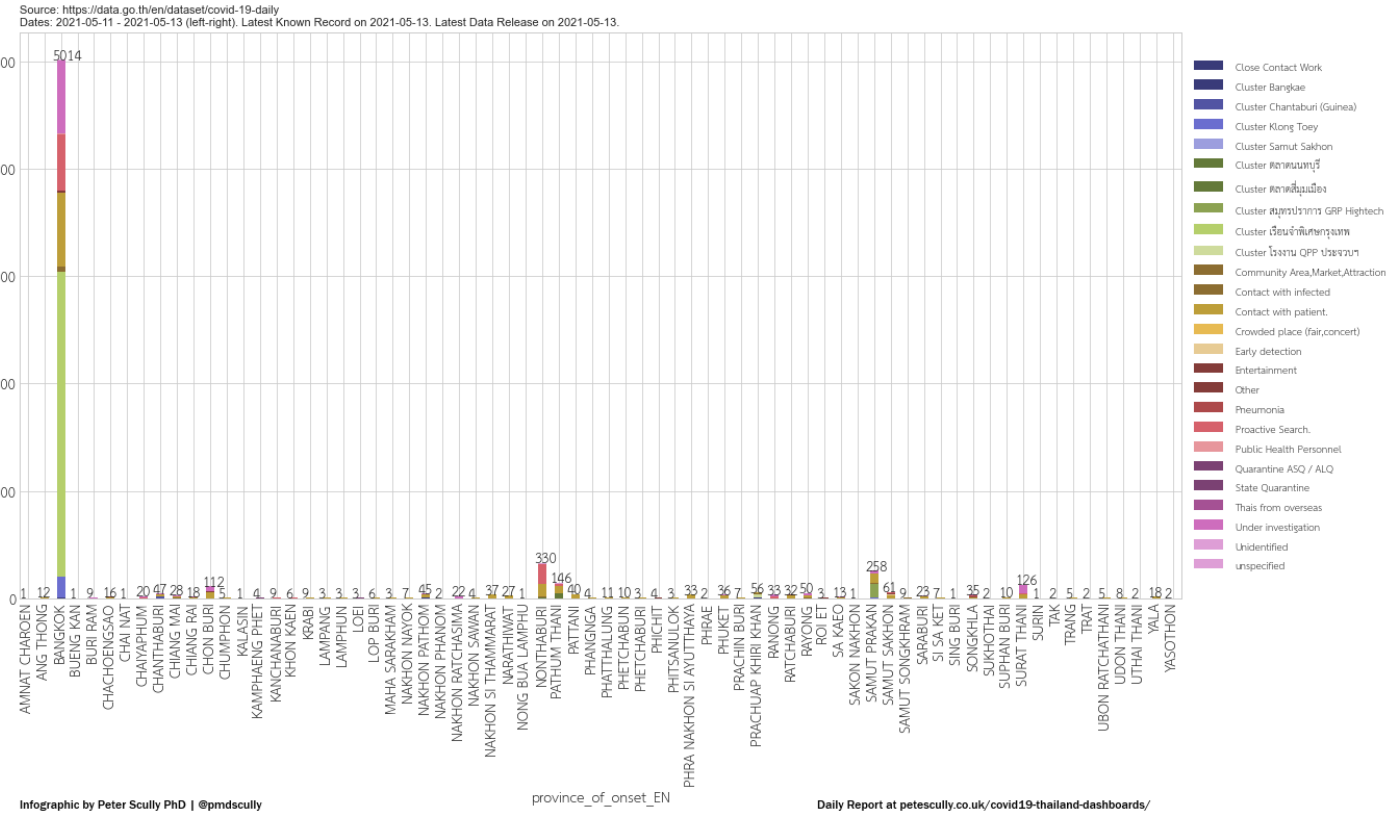
Source: fb.com/informationcovid19 > github.com/djay/covidthailand/. Showing 2267/2256 of Today's Reported Cases.

Latest Known Record on 2021-05-14. Latest Known Data Release on 2021-05-14 T01:00.

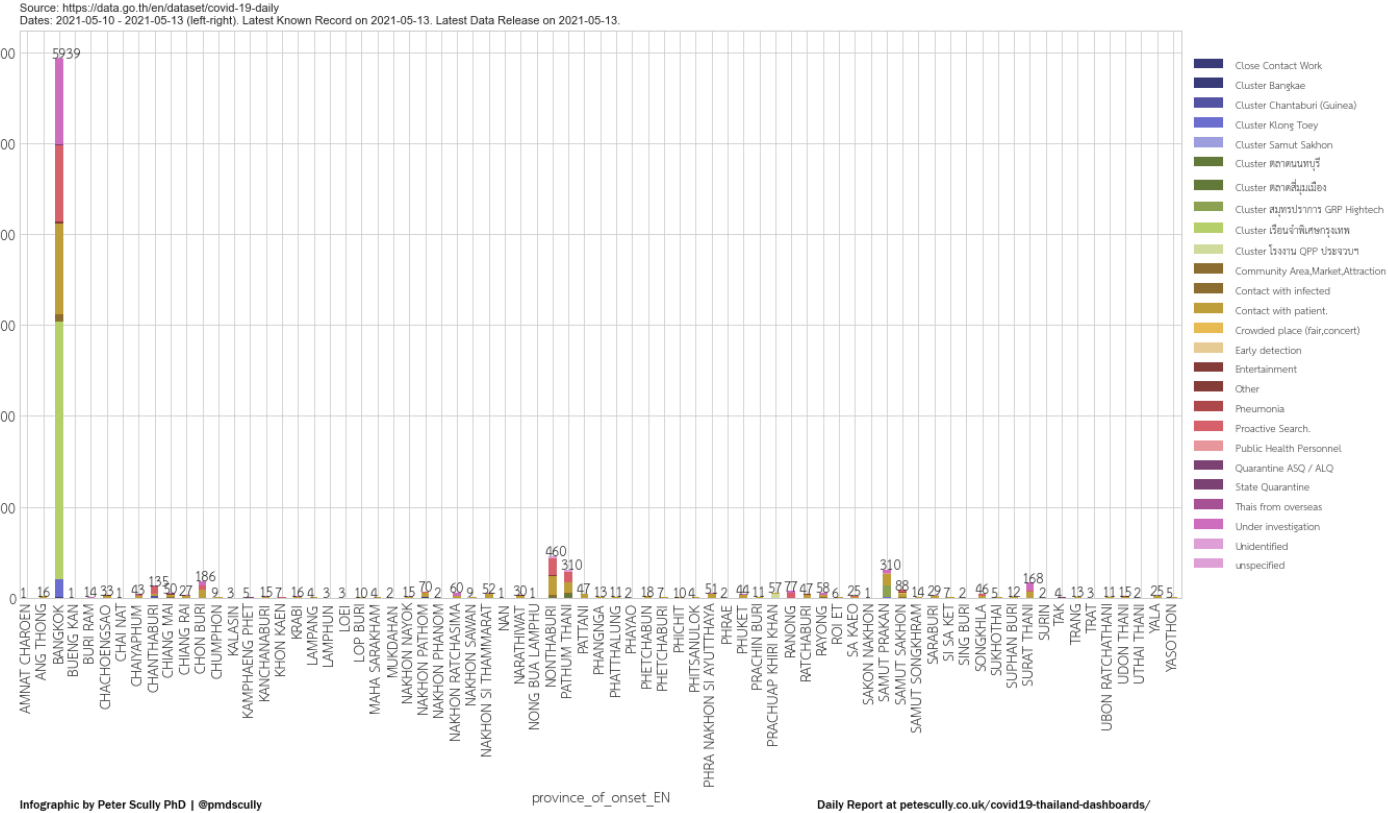


- Plots Show Cases announced at province of 'onset' over 2-days and 3-days.
- Source: <https://data.go.th/en/dataset/covid-19-daily>

Thailand Province (Onset)-Cluster and Case Counts over 2-Days

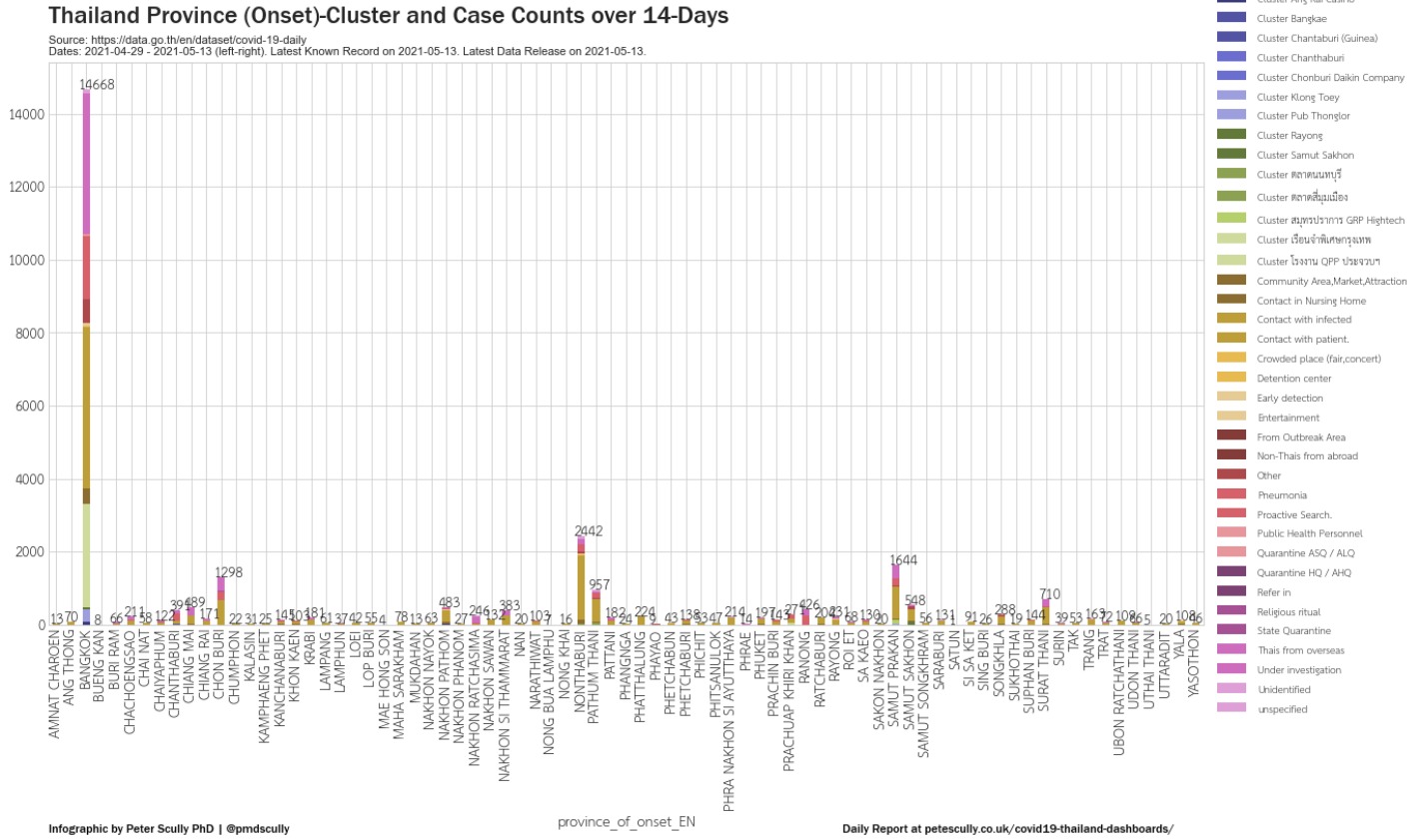
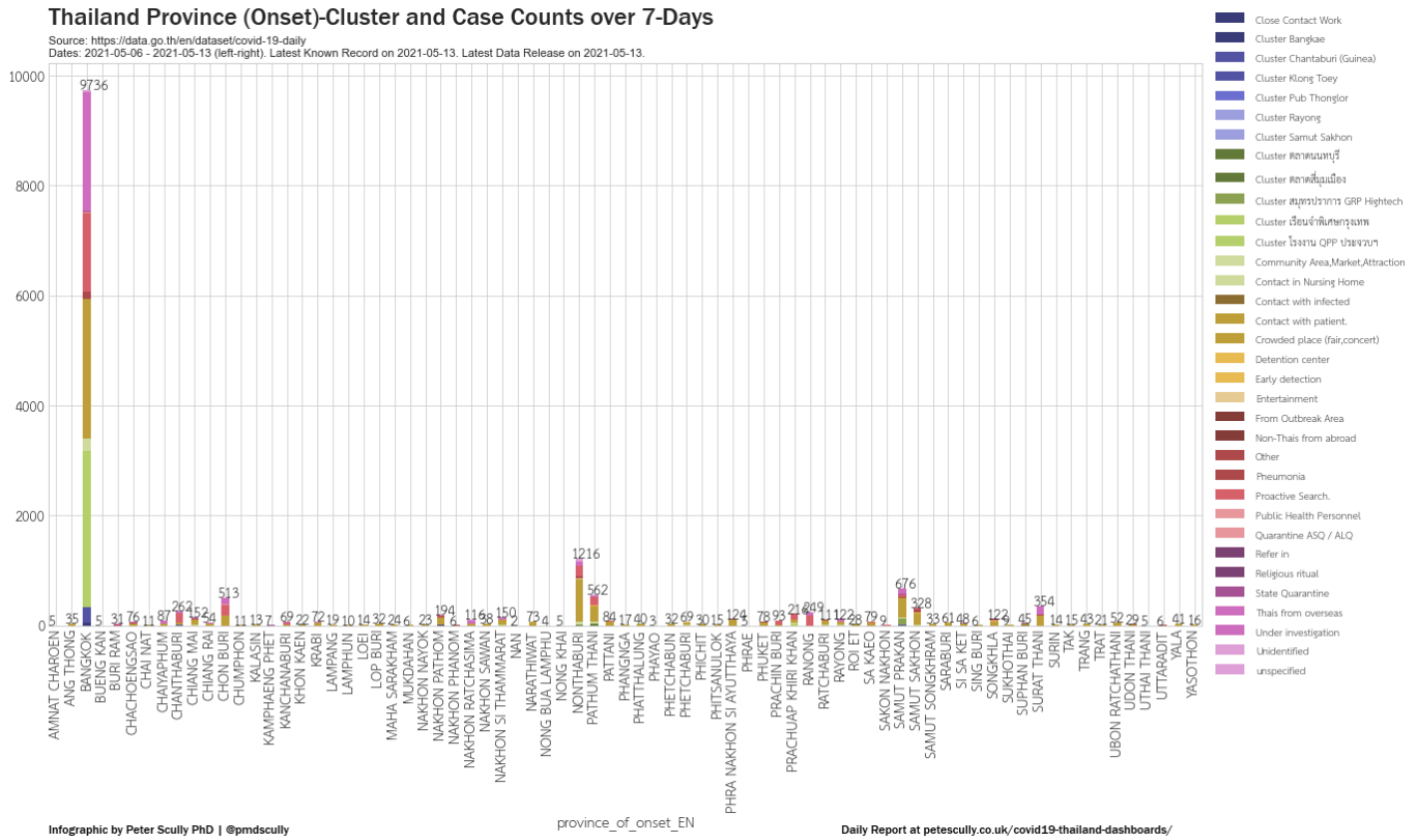


Thailand Province (Onset)-Cluster and Case Counts over 3-Days



New Cases Announced by Risk Clusters by Province (Where infection was contracted): Via COVID-19-Daily Open Gov Data. (Over 7, 14-days)

- Plots Show Cases announced at province of 'onset' over 7-days and 14-day.
- Source: <https://data.go.th/en/dataset/covid-19-daily>



Cluster Progression by Region of Thailand over the past 30-days: Via COVID-19-Daily Open Gov Data.

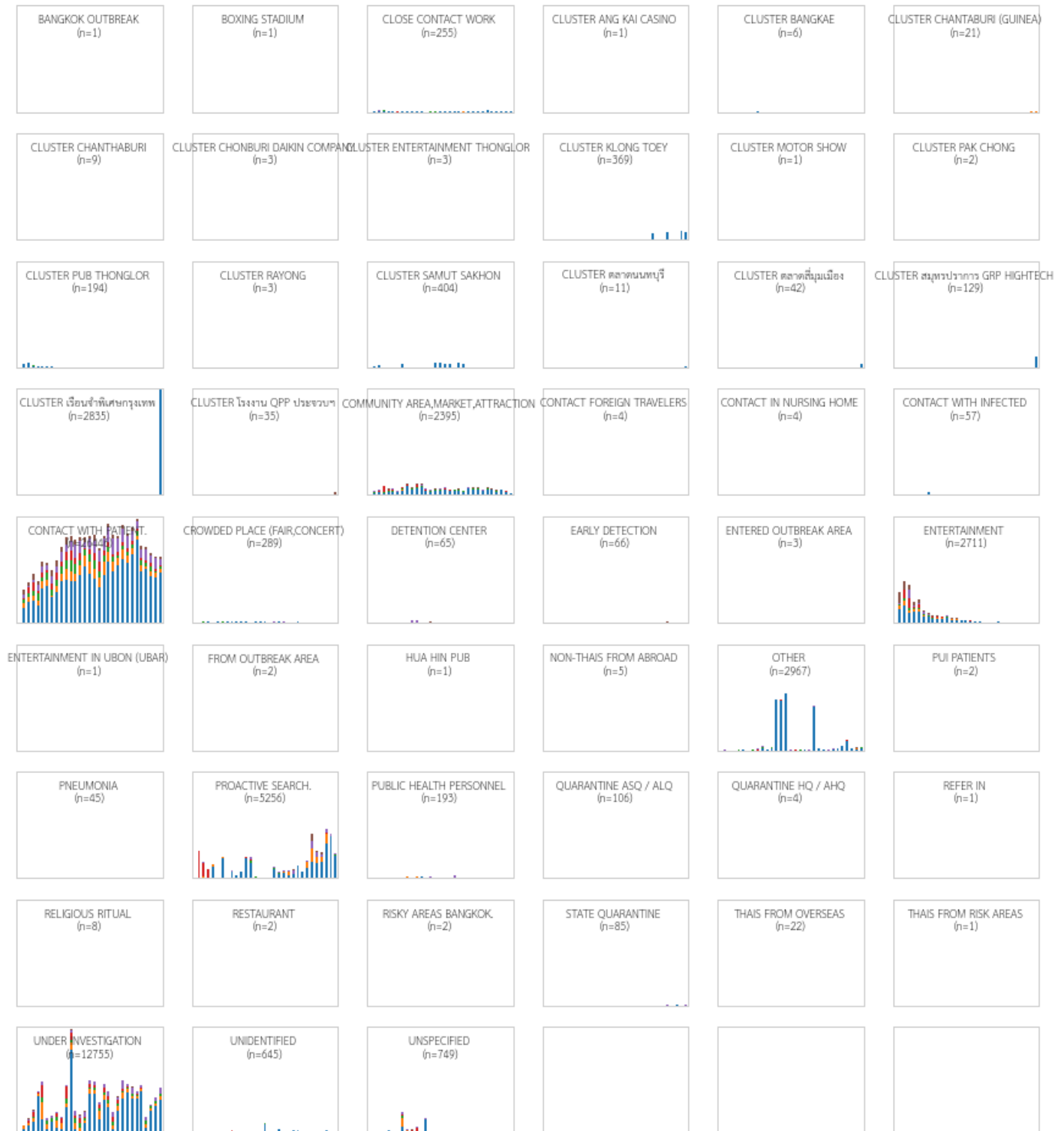
- Plots show the Cluster ('risk' column) of newly announced cases, grouped by the provincial regions ('onset') over the past 30 days.
- Dates are shown oldest to most recent (Left to Right). Number of reported cases (Bottom to Top). Colours indicate region of case.
- Source: <https://data.go.th/en/dataset/covid-19-daily>

Cluster Spread by Region (30 Days)

2021-04-13 - 2021-05-13 (Left-Right). Y-Scale: 0-1250. NB: Unspecified are missing values.

Source: <https://data.go.th/en/dataset/covid-19-daily>

Latest Known Case on 2021-05-13. Latest Known Data Release on 2021-05-13.



Infographic by Peter Scully PhD | @pmdscully

Daily Report at petescully.co.uk/covid19-thailand-dashboards/

Vaccines Administered by Province: Via Thai MOPH.

- Plots show cumulative doses administered by province. n_1, n_2 are the latest (to-date) administered doses for Doses 1 and 2 respectively. Date of report releases are shown, which are 1-day delayed. First DDC.MOPH report was announced on Feb 27th. NB: The plot's start date may differ, as historical data is gradually added to the dataset.
- Disclaimer 9/5 to 13/5: In the recent days, the reported number of Samut Sakhon Dose 2 (see the MOPH PDFs, if curious) has gone up then down; in the plot below, that has changed 17% to 15%.
- Source: <https://ddc.moph.go.th/dcd/pagecontent.php?page=641&dept=dcd> • Source Population per Province (2019): https://en.wikipedia.org/wiki/Provinces_of_Thailand • Source Population Thailand (Est-2019): <https://en.wikipedia.org/wiki/Thailand>
- Data Made Available via: <https://github.com/djay/covidthailand>

Vaccinations Administered per Province

Dates 2021-03-06 - 2021-05-13 (Left-Right). Y-Scale: 0-1 Million.

Total Dose 1: 1,416,432 (2.1%), Dose 2: 708,300 (1.1%). Doses 1 & 2 Administered as n1,n2. SV% and AZ% show allocations. Large % shows Dose2/Prov Pop.

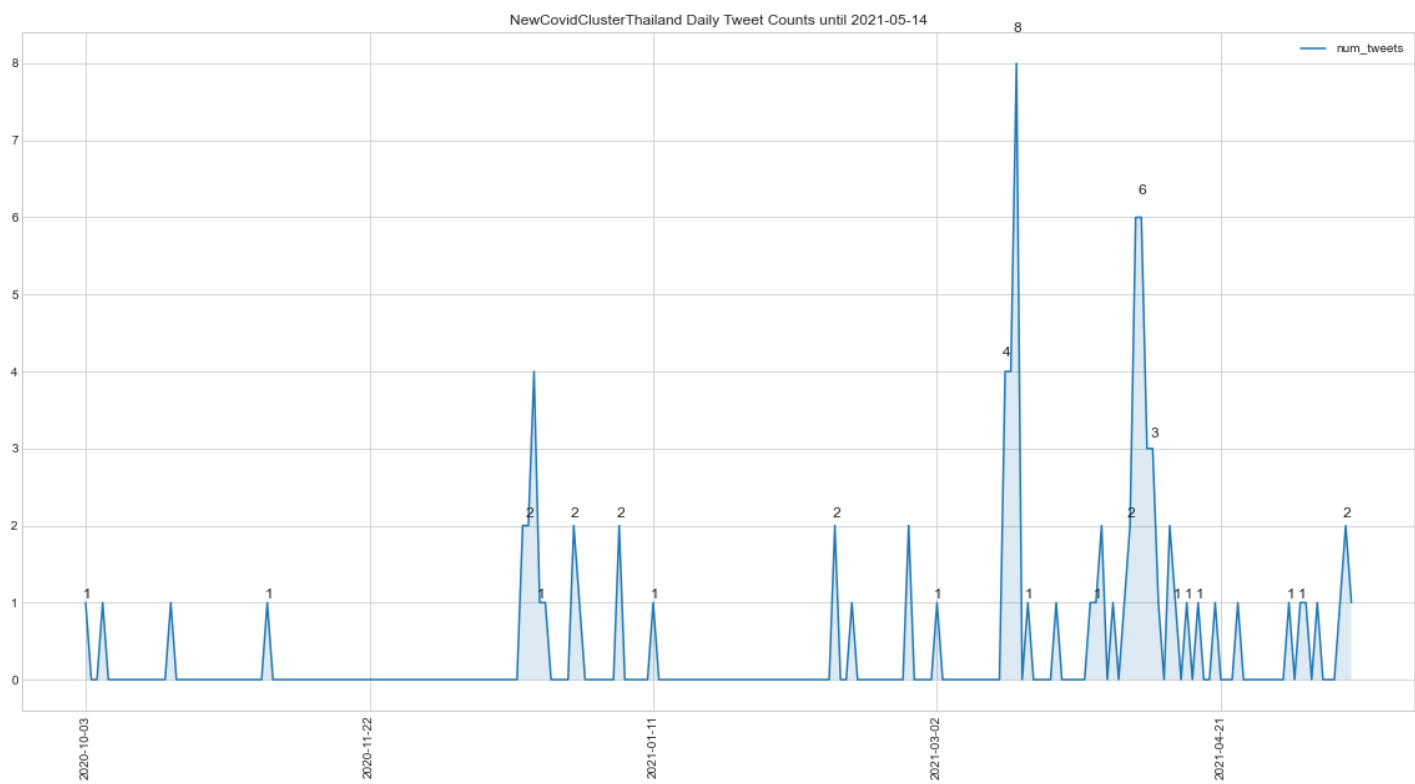
Source: <https://ddc.moph.go.th> > <https://github.com/djay/covidthailand>. Latest Known Record on 2021-05-13. Latest Known Data Release on 2021-05-13.

— Vaccinations Dose 1
— Vaccinations Dose 2



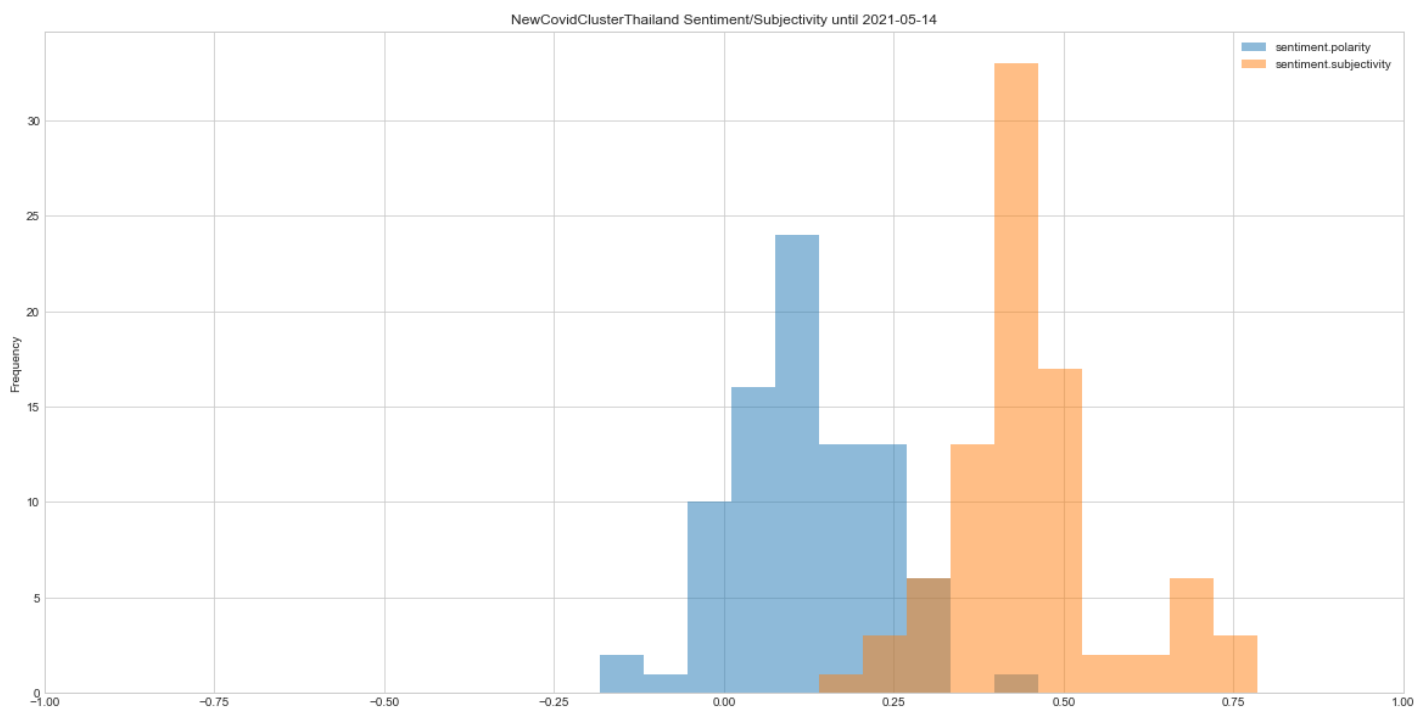
New Cluster Tweets - Public Reports Posted on Twitter

- 2 new trend(s) of 'new covid cluster thailand', started on Sun-14-Mar-2021, and Tue-06-Apr-2021, in the past 120-days (85 samples).
- Source: Twitter API



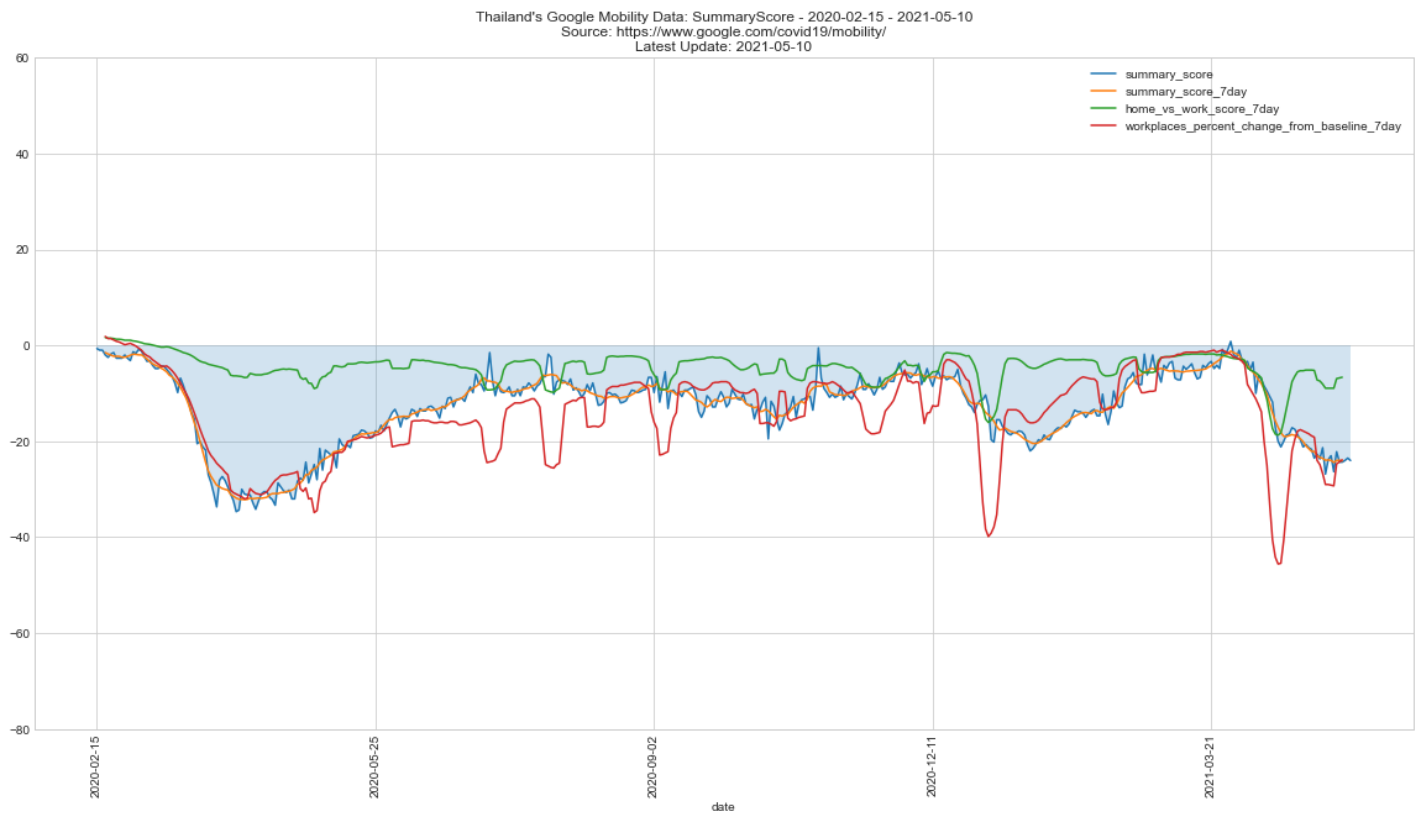
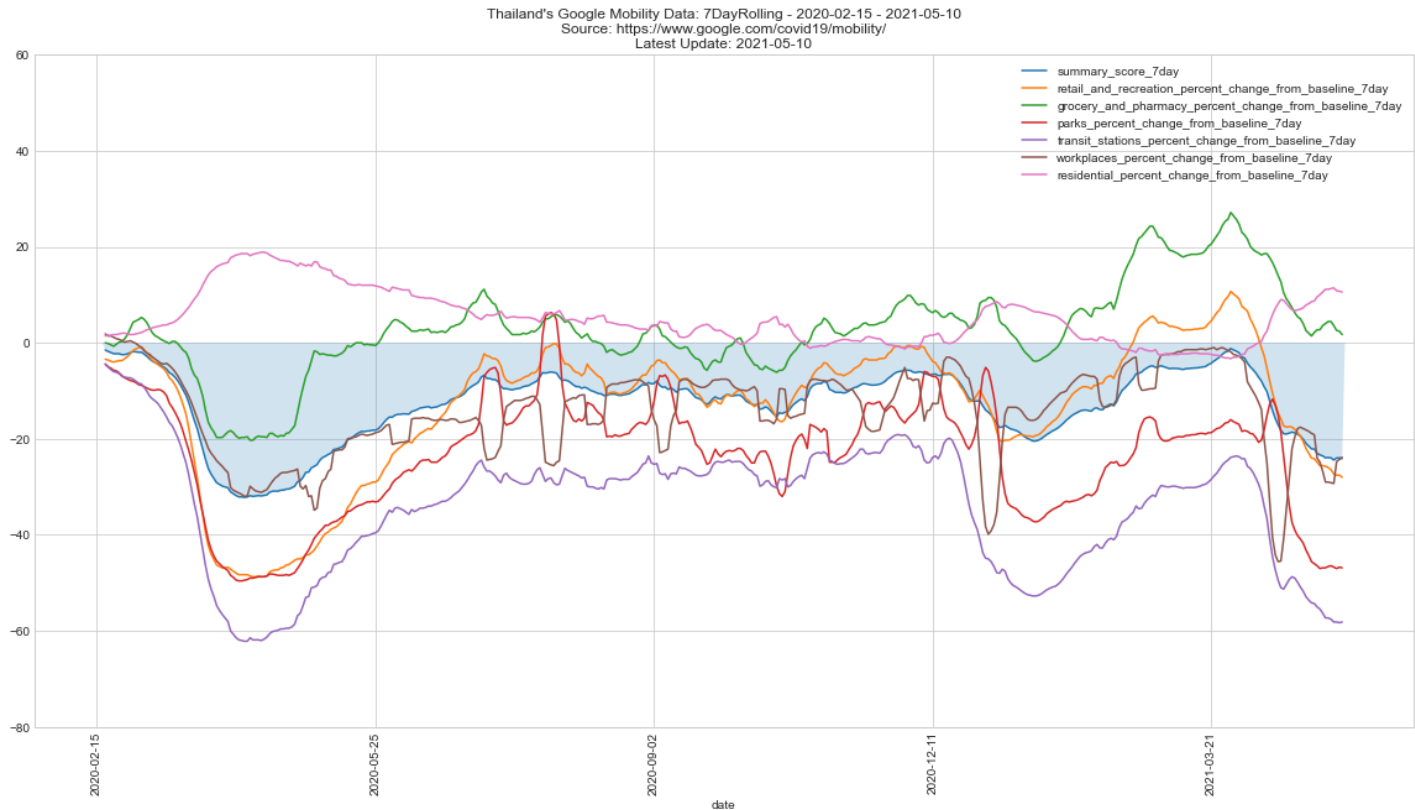
Sentiment Polarity and Subjectivity Indicators of New Cluster Tweets - Public Reports Posted on Twitter

- Public sentiment is neutral-positive (0.15) and subjectivity is neutral (0.45) over the past 14-days (7 samples).
- Note: Polarity is measured between -1.0 (negative) and +1.0 (positive). Subjectivity is measured between 0.0 (objective) and +1.0 (subjective).
- Source: Twitter API



Google Mobility Data: Thailand

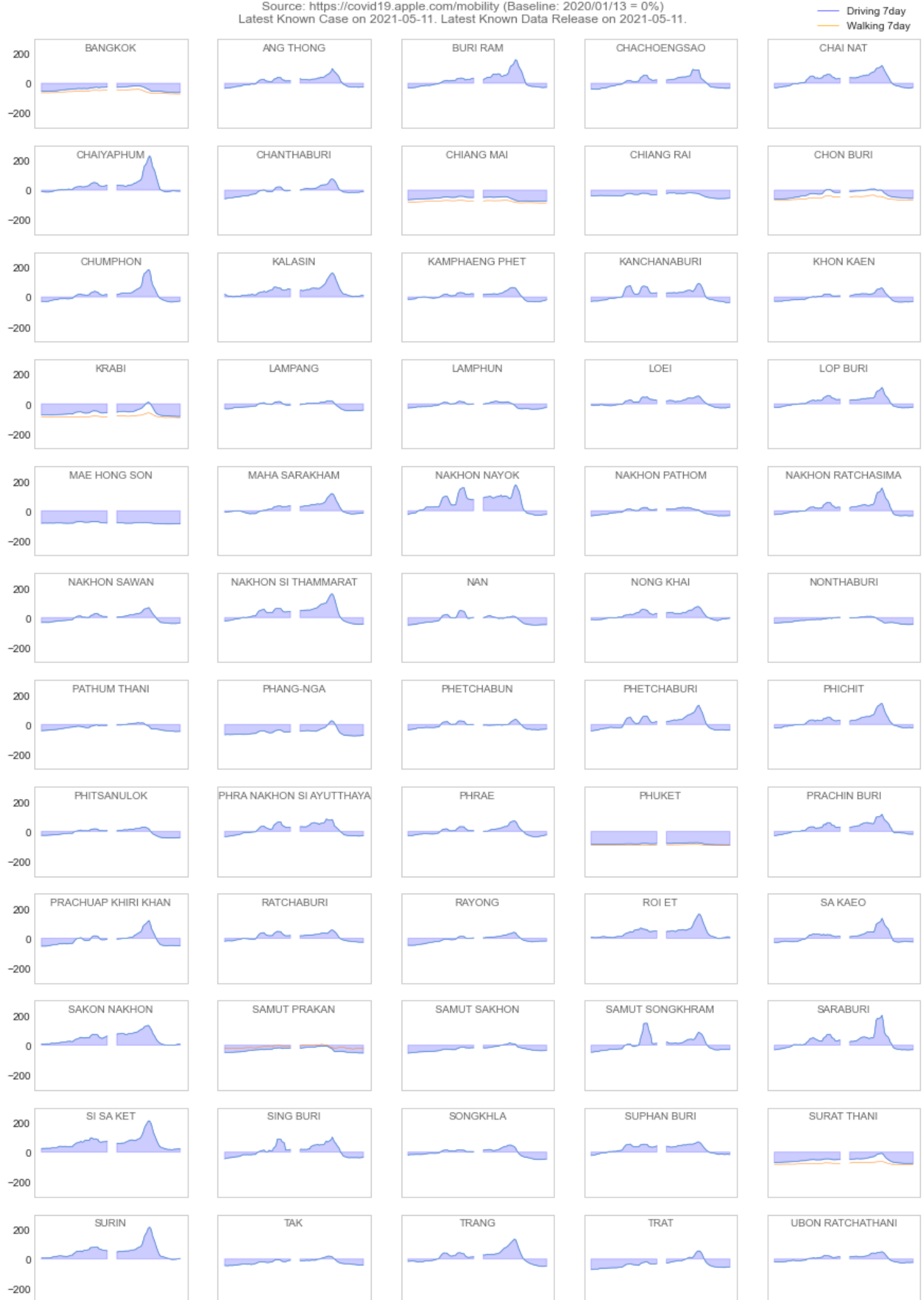
- The blue area is an indicator of generalised mobility behaviour. It is the daily-mean across the 6-types of mobility data collected.
- Data is compared to baseline values computed as the median in the 5-week period Jan 3 - Feb 6, 2020 by day of the week. Data is updated regularly, but not daily.
- Source: <https://www.google.com/covid19/mobility/>



Apple Mobility Trends: Thailand by Province

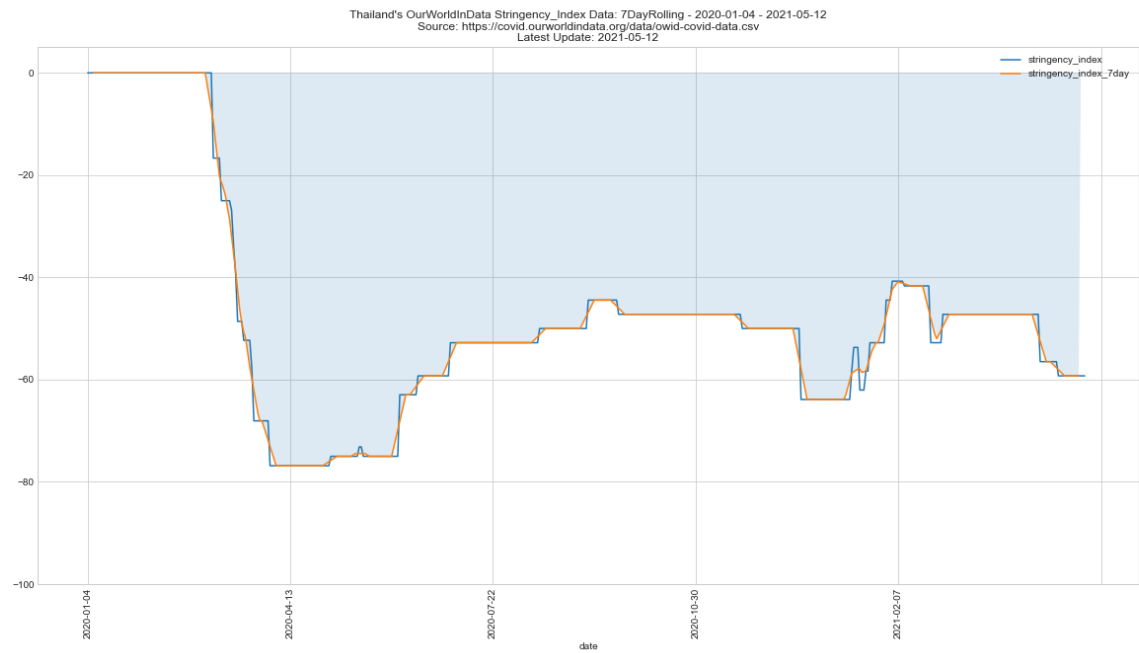
- The blue and orange lines are indicators of relative mobility, via driving and walking respectively. A rolling 7-day mean is shown, over the past 120-days (left to right) and with range of -300 to +300 (bottom to top).
- Data shows change in routing requests since 13 January 2020. The baseline has been adjusted from 100% to 0, as a +/- Index. 12 March 2021 data is not available. Not all province data is available.
- Source: <https://covid19.apple.com/mobility/>

Apple's Mobility Data on Driving and Walking per Province (120-days) 2021-01-11 - 2021-05-11 (Left-Right). Y-Scale: -300-300.
 Source: <https://covid19.apple.com/mobility> (Baseline: 2020/01/13 = 0%)
 Latest Known Case on 2021-05-11. Latest Known Data Release on 2021-05-11.



Our World In Data (OWID): Stringency_Index - Thailand

- This measures the level of restrictions reported to OWID, which is a comparable measure used across the world. See OWID's explanation for details.
- Note: the Index has not reflected provincial-level restriction changes during April 1st-April 23rd'21.
- The Index has been adjusted by negation, i.e. 0-100 becomes 0 to -100. Therefore negative numbers indicate restrictions, whereas 0 indicates no restrictions.
- Source: <https://ourworldindata.org/coronavirus/country/thailand#government-stringency-index>



- Infographics from Thai COVID-19 Situation Administration (CCSA) daily briefing, typically updated after 13:00 (otherwise yesterday's images shown)
- Source: <https://facebook.com/informationcovid19>



ข้อมูล ณ วันที่ 14 พฤษภาคม 2564 เวลา 00.00 น.



รายงานสถานการณ์ COVID-19 ในประเทศไทย

ระลอกใหม่ เมษายน ประเทศไทย ตั้งแต่วันที่ 1 เม.ย. - 14 พ.ค. 64

ผู้ป่วยรายใหม่วันนี้

+2,256 ราย

ติดเชื้อ
ในประเทศ
2,068 ราย

ติดเชื้อจาก
ต่างประเทศ
5 ราย

จากเรือนจำ/
กักตัว
183 ราย

ผู้ป่วยรายใหม่
จากระบบเฝ้าระวังและระบบบริการฯ
ค้นหาผู้ติดเชื้อเชิงรุกในชุมชน
จากเรือนจำ / กักตัว
ผู้ที่เดินทางจากต่างประเทศ

ผู้ป่วยยืนยันสะสม

67,187 ราย

- ผู้ป่วยจากระบบฯ 53,120 ราย
- ค้นหาเชิงรุกในชุมชน 10,709 ราย
- จากเรือนจำ/ กักตัว 3,018 ราย

- จากต่างประเทศ 340 ราย

ประวัติเสีย

1,523 ราย**545** ราย**183** ราย**5** ราย

รวม 2,256 ราย

หายป่วยแล้ว

34,890 รายเพิ่มขึ้น **1,701** ราย

เสียชีวิต

+30 คน

เสียชีวิตสะสม **454** คน
ร้อยละ (Percentage) 0.68%

ผู้รับวัคซีน

ฉีดแล้ว **2,124,732** โดส

+21,302 ราย
สะสม 1,416,432 ราย

+63,067 ราย
สะสม 708,300 ราย

ข้อมูล 28 ก.พ. - 13 พ.ค. 2564

ผู้ป่วยรักษาอยู่

33,186 ราย

ใน รพ.
20,669 ราย
รพ.สนาม
12,517 ราย

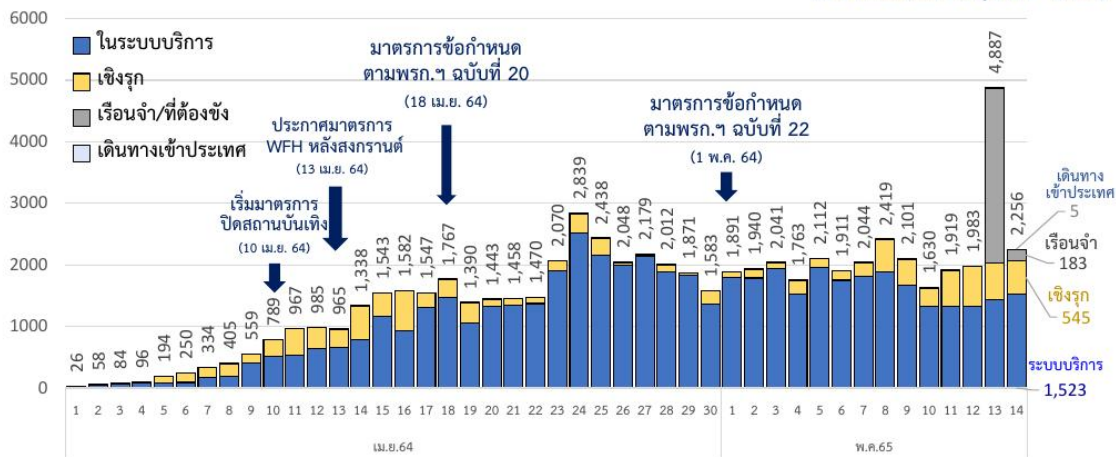
อาการหนัก **1,203** ราย
(ใส่เครื่องช่วยหายใจ **408** ราย)

โดย กรมควบคุมโรค กระทรวงสาธารณสุข



จำนวนผู้ติดเชื้อรายวัน ระลอกเมษายน 64 (1 เม.ย.-14 พ.ค. 64)

(ยอดสะสม 67,187 ราย)



แหล่งข้อมูลและจัดทำโดย : กรมควบคุมโรค กระทรวงสาธารณสุข

Thai MOPH Feed Infographics: via Facebook Feed

- Source: <https://www.facebook.com/thaimoph/> - Typically updated after 09:00 to 12:00, otherwise yesterday's images shown.



สรุปสถานการณ์ ศูนย์ข้อมูล COVID-19

ศูนย์ข้อมูล COVID-19 📞 สายด่วน 1111

กรมควบคุมโรค กระทรวงสาธารณสุข

30 ราย

สะสม 454 ราย